

Daily COVID-19 COUNTY UPDATE— November 16, 2020

COVID-19 Metrics for Washington County

Total Cumulative Cases: 13,474

Confirmed Cases: 11,627

Probable Cases: 1,847

Total Active Cases: 1,290

Active Confirmed Cases: 764

Active Probable Cases: 526

Total Recovered Cases: 12,019

Recovered Confirmed Cases: 10,717

Recovered Probable Cases: 1,302

Total Deaths: 164

Confirmed Deaths: 146

Probable Deaths: 18

COVID-19 Metrics for Benton County

Total Cumulative Cases: 10,354

Confirmed Cases: 8,951

Probable Cases: 1,403

Total Active Cases: 1,373

Active Confirmed Cases: 895

Active Probable Cases: 478

Total Recovered Cases: 8,845

Recovered Confirmed Cases: 7,938

Recovered Probable Cases: 907

Total Deaths: 135

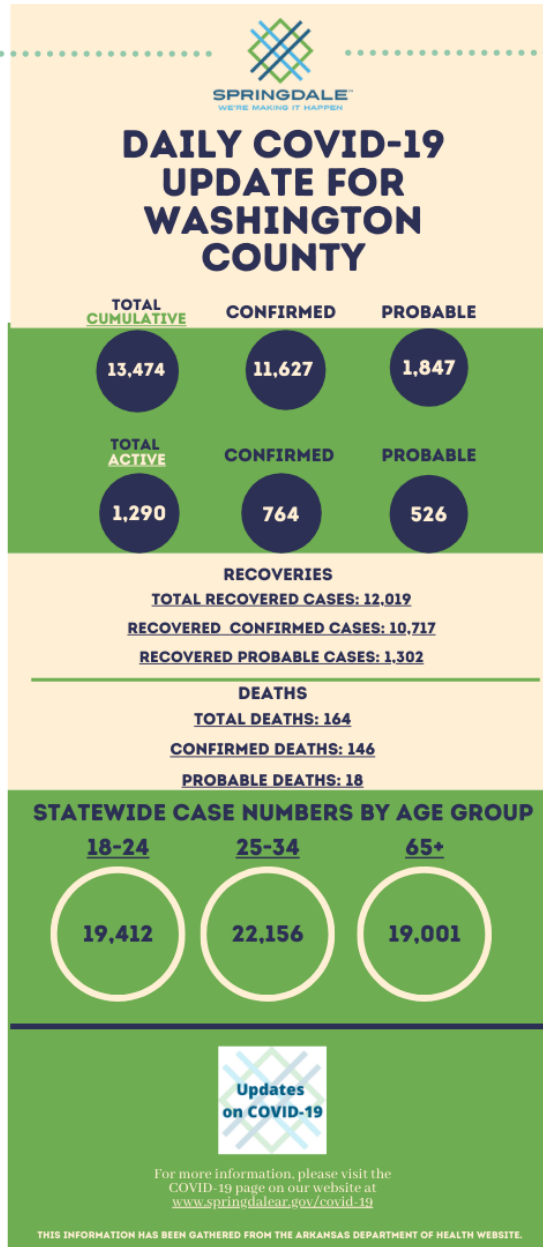
Confirmed Deaths: 117

Probable Deaths: 18

This data has been gathered from the Arkansas Department of Health's COVID Case Update website. **PLEASE NOTE: These numbers for Washington and Benton Counties are currently running behind. The data can be found

at <https://experience.arcgis.com/.../c2ef4a4fcbe5458bf2e48a21e4...>

For more information and updates, visit our website at <https://www.springdalear.gov/CivicAlerts.aspx?AID=648>





DAILY COVID-19 UPDATE FOR BENTON COUNTY

TOTAL CUMULATIVE CONFIRMED PROBABLE

10,354

8,951

1,403

TOTAL ACTIVE

CONFIRMED

PROBABLE

1,373

895

478

RECOVERIES

TOTAL RECOVERED CASES: 8,845

RECOVERED CONFIRMED CASES: 7,938

RECOVERED PROBABLE CASES: 907

DEATHS

TOTAL DEATHS: 135

CONFIRMED DEATHS: 117

PROBABLE DEATHS: 18

STATEWIDE CASE NUMBERS BY AGE GROUP

18-24

25-34

65+

19,412

22,156

19,001



For more information, please visit the
COVID-19 page on our website at
www.springdalear.gov/covid-19

THIS INFORMATION HAS BEEN GATHERED FROM THE ARKANSAS DEPARTMENT OF HEALTH WEBSITE.