

GOVERNOR UPDATE ON COVID-19: January 12, 2021

Cumulative: 259,553—there has been an increase of 3,209 cases in 24-hours.

25,702 ACTIVE cases (+168)

Washington County Active Cases (7 day intervals)

June 29 – 1180

July 6 – 1167

July 13 – 734

July 20 – 680

July 27 - 537

August 3 – 461

August 10 – 342

August 17 – 203

August 24- 205

September 1- 238

September 8- 775

September 15- 748

September 22- 581

September 29-447

October 6- 483

October 13- 580

October 20-592

October 27- 588

November 3-715

November 10- 886

November 17- 1,334

November 24- 1,383

December 1- 1,216

December 7- 1,463

December 15- 1,762

December 22- 1,844

December 29- 1,724

January 5- 2,023

Today- 2,319

Deaths: 4,121 (+40)

Recoveries: 229,690 (confirmed and probable combined)

Hospitalized: 1,354 (-17)

Tests done in the last 24 hours: 6,358

Antigen tests in the last 24 hours: 4,334

Our Counties

Benton – 377 (Only counties with more than 20 new cases reported)

Washington – 268 (Only counties with more than 20 new cases reported)

VACCINATIONS RECEIVED AND GIVEN (to date)—Current Phase: 1-A

****Vaccination Guide from the Arkansas Department of Health will be available soon. More information will be released soon.**

- *Health care workers*
- *Long-term care residents/staff*
- *EMS, Fire, police first responders+ other high priority groups (through nearest 1-A pharmacy)*

Doses Received: 227,500 (+24,125)

Doses Given: 89,449 (+8,653)

UPDATE ON PHASE 1-B: Will begin vaccinating portions of those in Phase 1-B— That includes those 70 years or older and those in education, including daycares.

Phase 1-B: Beginning on Jan. 18

The initial 1-B groups eligible to receive vaccinations will be:

- **Arkansans aged 70 or older**
 - Vaccines available through many community pharmacies located in every county in Arkansas.
 - Visit healthy.arkansas.gov for a map of participating pharmacies.
 - Call ahead and make an appointment.
 - Vaccine clinics and events may be available in your area through hospitals and health care providers.
- **Education, including higher ed and child care**
 - Districts should determine how many doses are needed, and then reach out to the ADH Local Health Unit or pharmacy in their county to schedule a vaccination clinic.



COVID-19 Metrics for Washington County

Total Cumulative Cases: 24,355

Confirmed Cases: 19,181

Probable Cases: 5,174

Total Active Cases: 2,319
Active Confirmed Cases: 1,576
Active Probable Cases: 743

Total Recovered Cases: 21,797
Recovered Confirmed Cases: 17,410
Recovered Probable Cases: 4,387

Total Deaths: 236
Confirmed Deaths: 193
Probable Deaths: 43

COVID-19 Metrics for Benton County

Total Cumulative Cases: 21,649
Confirmed Cases: 16,721
Probable Cases: 4,928

Total Active Cases: 2,367
Active Confirmed Cases: 1,574
Active Probable Cases: 793

Total Recovered Cases: 18,984
Recovered Confirmed Cases: 14,917
Recovered Probable Cases: 4,067

Total Deaths: 297
Confirmed Deaths: 229
Probable Deaths: 68
Probable Deaths: 55

****PLEASE NOTE:** These numbers for Washington and Benton Counties are currently running behind. This section comes from the COVID-19 dashboard updated by the Arkansas Department of Health: <https://experience.arcgis.com/.../c2ef4a4fcbe5458fbf2e48a21e4...>

For more information and updates, visit our website at <https://www.springdalear.gov/CivicAlerts.aspx?AID=648>



SPRINGDALE
WE'RE MAKING IT HAPPEN

DAILY COVID-19 UPDATE FOR BENTON COUNTY

TOTAL
CUMULATIVE

CONFIRMED

PROBABLE

21,649
(+128)

16,721

4,928

TOTAL
ACTIVE

CONFIRMED

PROBABLE

2,367
(-154)

1,574

793

RECOVERIES

TOTAL RECOVERED CASES: 18,984

RECOVERED CONFIRMED CASES: 14,917

RECOVERED PROBABLE CASES: 4,067

DEATHS

TOTAL DEATHS: 297

CONFIRMED DEATHS: 229

PROBABLE DEATHS: 68

STATEWIDE CASE NUMBERS BY AGE GROUP

18-24

25-34

65+

33,916

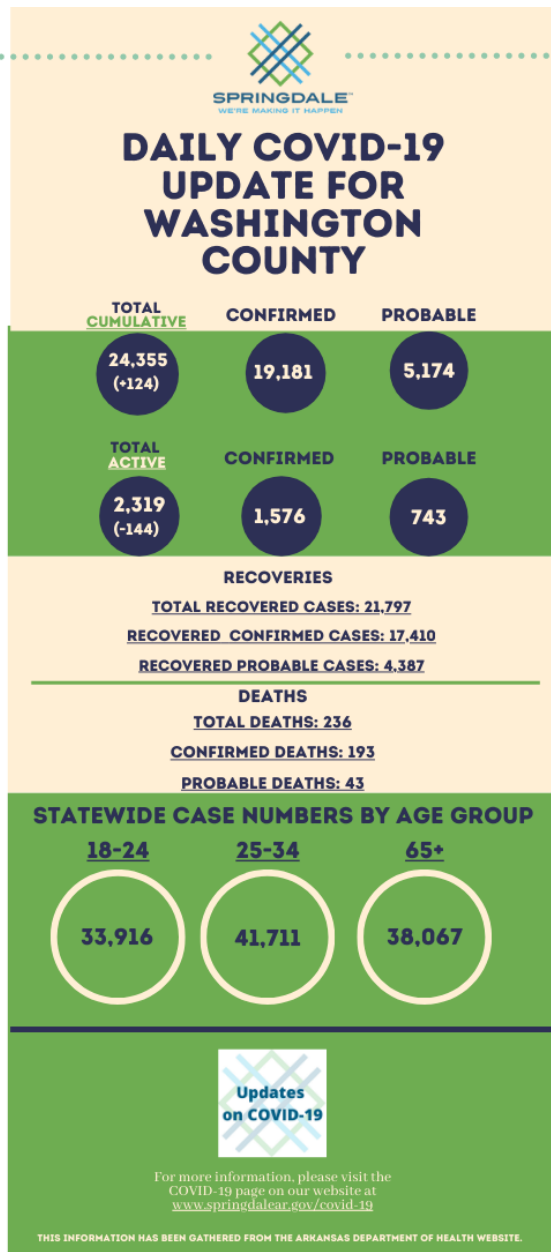
41,711

38,067



For more information, please visit the
COVID-19 page on our website at
www.springdalear.gov/covid-19

THIS INFORMATION HAS BEEN GATHERED FROM THE ARKANSAS DEPARTMENT OF HEALTH WEBSITE.



Low Income Home Energy Assistance Program

Assistance for electric and utility bills has been increased from \$500 to \$1,500

Includes benefits for gas, wood, propane and electric heating.

"The Summer Cooling Program ensures that low-income citizens, who are vulnerable to the effects of the hot, humid summers in Arkansas, have the benefit of air conditioning and are encouraged to use air conditioning in their homes because they have help with electricity bills."

For Assistance:

Washington County – 479-872-7479

Benton County – ohc.liheap@ohcnwa.org